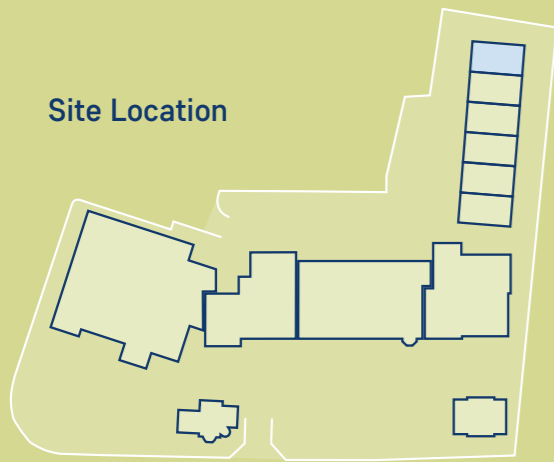
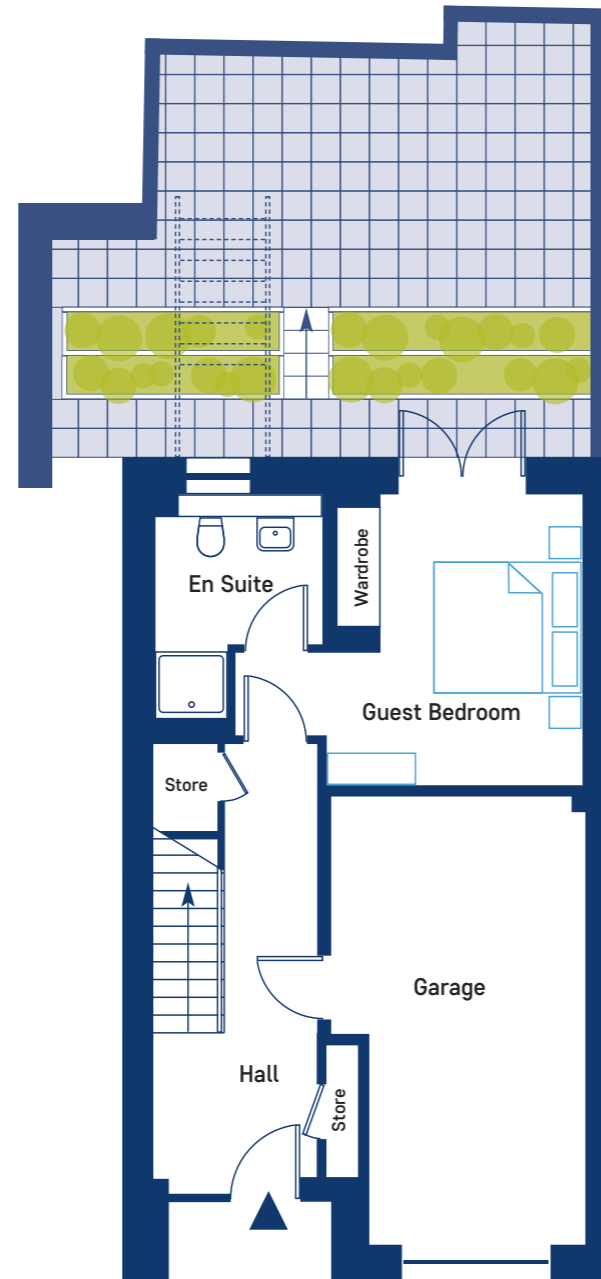


### Site Location

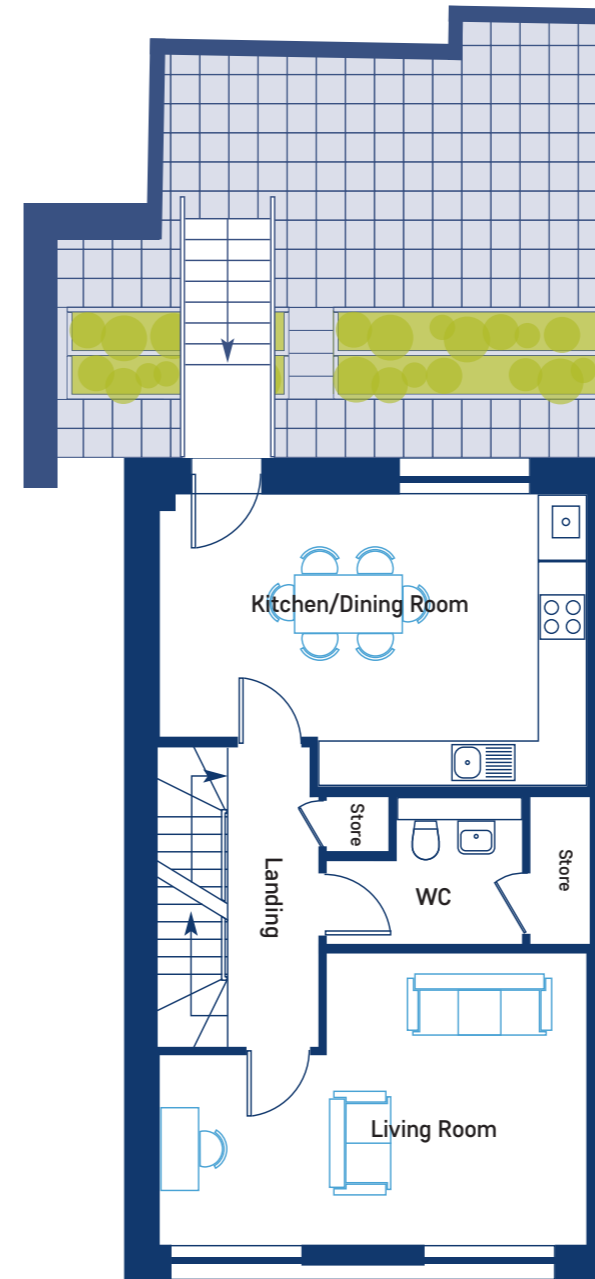


## Plot TH1

### Townhouse



Ground Floor



First Floor



Second Floor

### Room Dimensions

Plot 1	Metric	Imperial
Ground Floor		
Guest Bedroom	3.54 x 4.01	11'7 x 13'2
En Suite	2.31 x 3.16	7'7 x 10'4
Garage	3.52 x 6.18	11'7 x 20'3

Dimensions taken at the widest point

Plot 1	Metric	Imperial
First Floor		
Living Room	5.89 x 4.02	19'4 13'2
Kitchen/Dining Room	5.89 x 4.03	19'4 x 13'3
WC	2.67 x 2.02	8'9 x 6'7

Dimensions taken at the widest point

Plot 1	Metric	Imperial
Second Floor		
Master Bedroom	3.53 x 4.08	11'7 x 13'5
En Suite	2.28 x 2.54	7'6 x 8'4
Bedroom 2	3.53 x 4.05	11'7 x 13'3
Bedroom 3	2.96 x 2.71	9'8 x 8'11
Bathroom	3.54 x 2.02	11'7 x 6'7

Dimensions taken at the widest point



For further information or to register your interest, contact **Behnam Afshar** on **07967 322 025** or email [behnama@amanewtown.co.uk](mailto:behnama@amanewtown.co.uk)

AMA Homes  
15 Coates Crescent Edinburgh EH3 7AF  
[www.amahomes.co.uk](http://www.amahomes.co.uk)